

1. Click on zip file to run



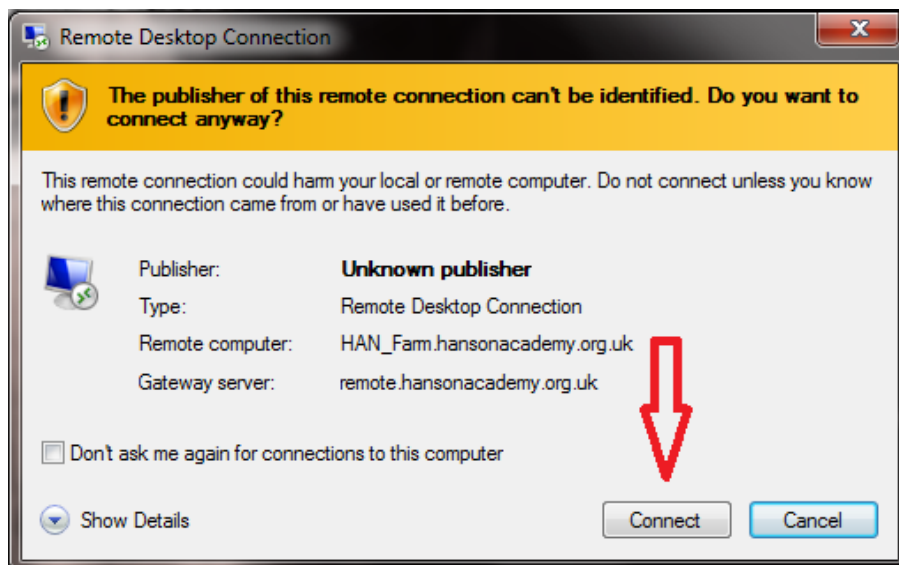
2.



Double click

HAN_RDP_Signed.RDP

3.



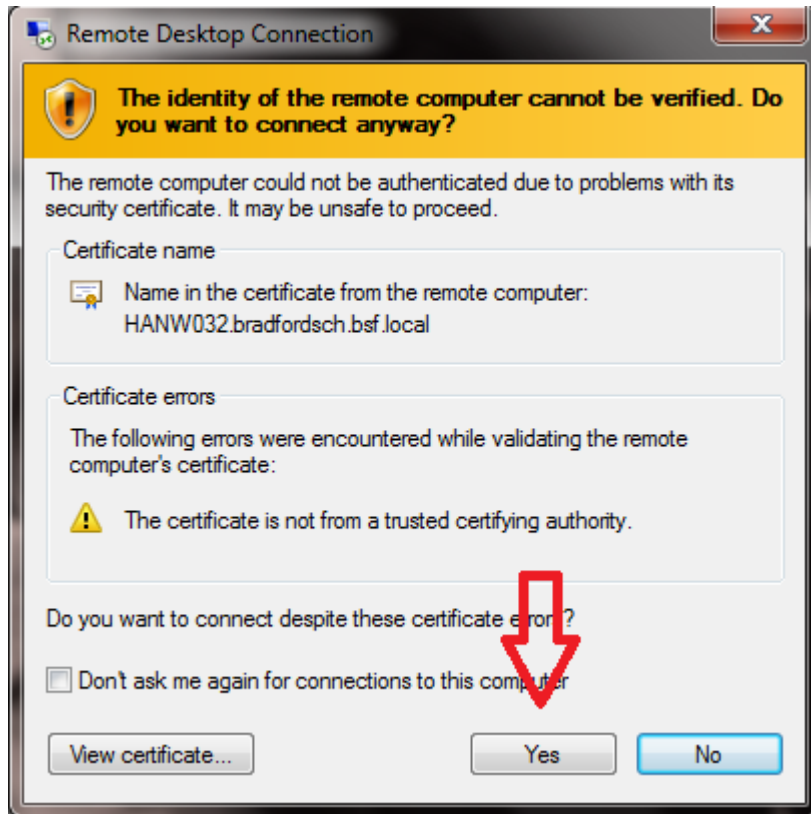
4. Click "Connect"

5. Enter your Hanson User Name and Password



6. You will then get a 'Connecting' Screen

On The Security Screen Select "Yes" , This may not appear depending on the up to date status of the software on the PC you are using .



You will get another Connecting Screen

You may get the Security Screen twice . On both Occasions select "Yes"

You will now connect to the Schools System .